

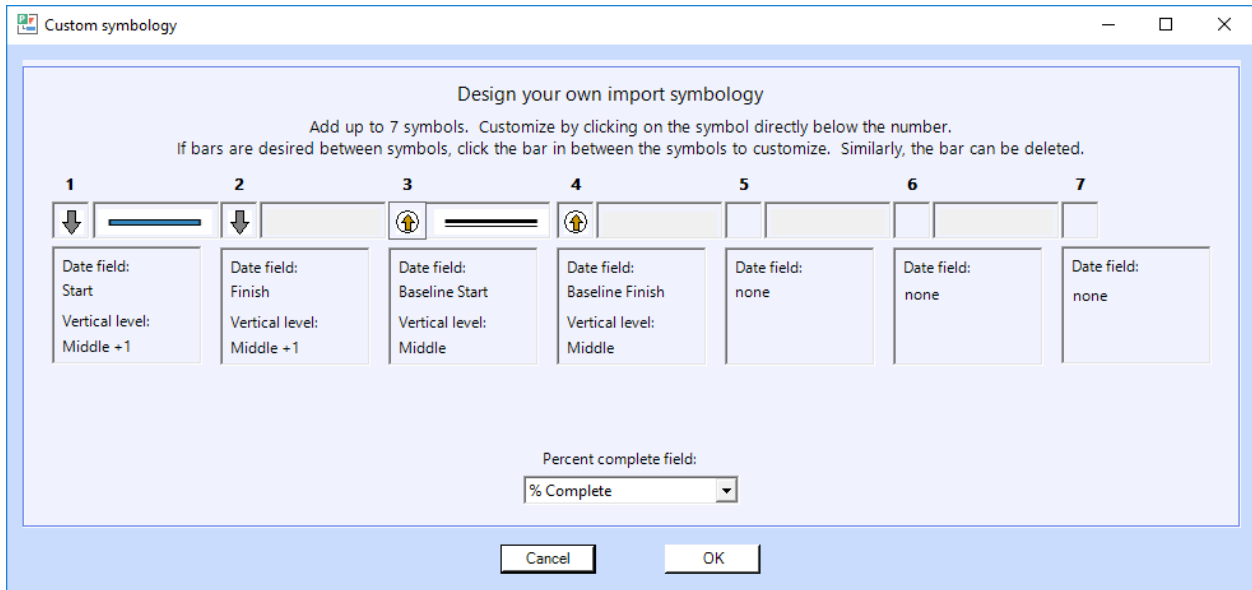
2017 New Project Interface Features

New Custom Symbology

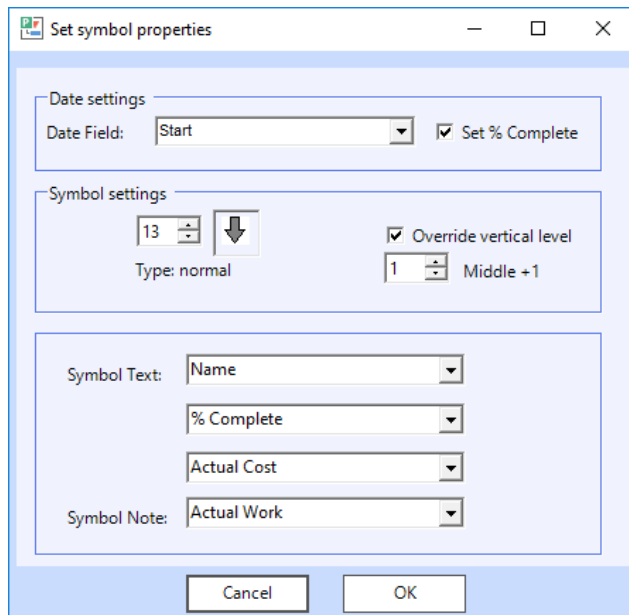
Custom symbology is available in 3 places.

1. As an option for ad-hoc import of tasks, via *Link to active Project Task*
2. *Import | Let the Wizard Guide You | Custom*
3. In the refresh dialog, used for the *Append tasks* option.

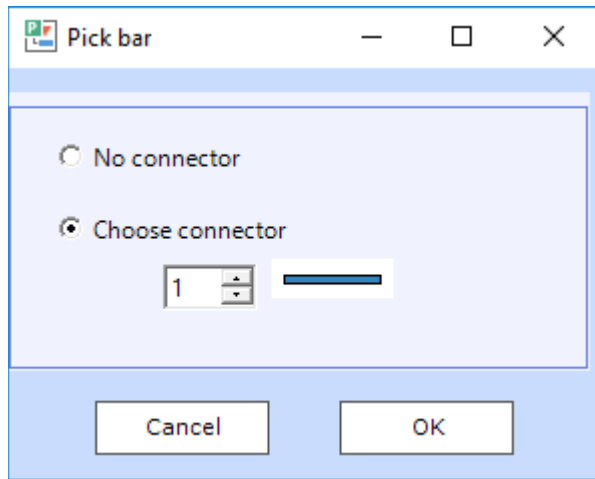
Clicking Customize on one of these 3 Get the Custom Symbology dialog box:



Click one of the 7 symbols and set the properties for that symbol



Click one of the 6 bars and set the properties for that bar



Changes to Link to Active MS Project Task

In past versions, only one task could be selected.

Now, a group of tasks can be added at once. (Select a range of tasks in Project. Then in Milestones choose Link to active MS Project task)

Link to selected MS Project task(s)

The screenshot shows a dialog box titled "Link to selected MS Project task(s)". It contains several sections:

- Tag task rows:** A checked checkbox. Below it, a text field "Tag with this ID field for future updates" contains "UniqueID". To its right, a text field "File nickname for project refresh" is empty.
- Add Symbolology:** A checked checkbox. Below it, "Add tasks using:" has two radio buttons: "Custom symbolology" (selected) and "Standard symbolology". Each has a "Customize" button below it. A green box highlights the "Custom symbolology" radio button and its "Customize" button, with the text "new custom symbology" written inside.
- Add tasks:** A section with two radio buttons: "All on selected row" and "On new rows" (selected). Below "On new rows" is a checked checkbox for "Outline new task(s)". A red box highlights this entire section.

A large green box on the right side of the dialog contains the text: "Add several tasks from Project at once. Add them on new rows in Milestones, or all on the same row."

Changes to Refresh:

Milestones Refresh Options - Refresh from Microsoft Project

Refresh Using:

SYMBOL TEXT

- Refresh Symbol Text
- Update only symbols with symbol text tags
- Update start and finish symbols using:

Start:	Finish:
<input type="text" value="none"/>	<input type="text" value="none"/>
<input type="text" value="none"/>	<input type="text" value="none"/>
<input type="text" value="none"/>	<input type="text" value="none"/>

PERCENT COMPLETE

- Refresh percent complete
- Update individual bars & symbols

% complete field:

SYMBOL NOTES

- Refresh Symbol Notes
- Update only symbols with symbol note tags
- Update start and finish symbols using:

Start:	Finish:
<input type="text" value="none"/>	<input type="text" value="none"/>

Update symbol tags

OPTIONS

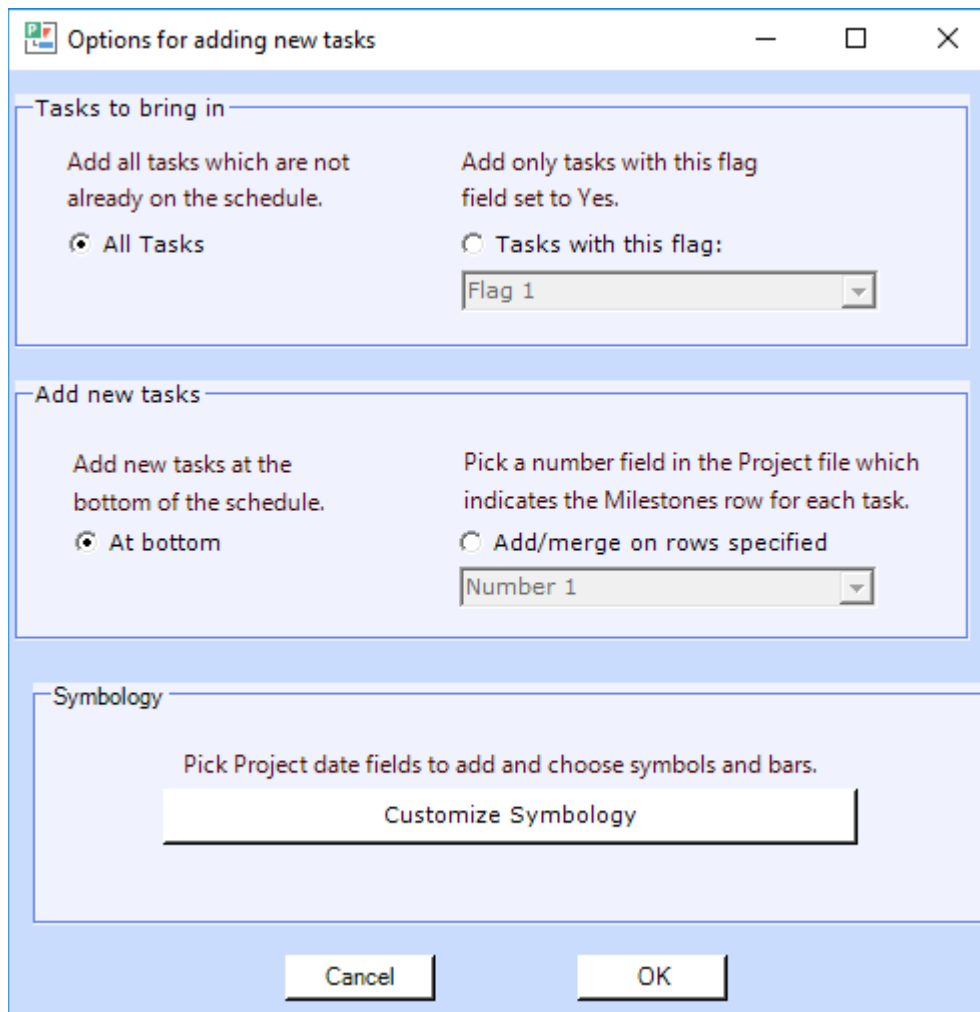
- Refresh tagged columns
- Update dependent symbols
- Ignore times (compare date only)
- Highlight Changed Dates
- Reset date Range
- Append new tasks
- Report obsolete milestones
- Highlight obsolete milestones
- Report missing Project tasks

Constraint Field:

Changes to Refresh – continued....

Refresh Append Options.

- Choose to append only flagged tasks
- Choose to either put the tasks at the bottom of the schedule or merge them in using a number field to indicate which row in Milestones they should be added to.



Changes to import

- For Let the Wizard Guide you import choice, added presentation timeline as a symbology choice.

- For Coded Symbols and Bars, it's now possible to have comma delimited fields supporting the use of multiple instances of a task on one or more task row.
 - Fields can now be Text fields in addition to number and outline code fields
 - If multiple sets are used, the Symbology field must have one entry for each set. The other fields (toolbox and milestones row) should have an entry for each symbology entry but if they don't the first entry will be used.
- Multiple symbology types can now be imported for a single Microsoft Project task. For example, task 19 can appear on Milestones row 1 as a Finish date and also appear on Milestones row 20 as a start – finish bar. Any single task can be represented up to 10 times on a single Milestone schedule. This feature applies to the following import formats: Coded Symbols and Bars and Coded Outlined.
 - Fields can now be Text fields in addition to number and outline code fields
 - If multiple sets are used, the Symbology field must have one entry for each set. The other fields (toolbox and milestones row) should have an entry for each symbology entry but if they don't the first entry will be used.
- For Coded Symbols and Bars and Coded Outlined, the following symbology types have been added:
 - Case 12 'bars s+f and baseline s+f with status for start and finish
 - Case 13 'baseline1
 - Case 14 'baseline2
 - Case 15 'baseline3
 - Case 16 'baseline4
 - Case 17 'baseline5
 - Case 18 'baseline6
 - Case 19 'baseline7
 - Case 20 'baseline8
 - Case 21 'baseline9
 - Case 22 'baseline10